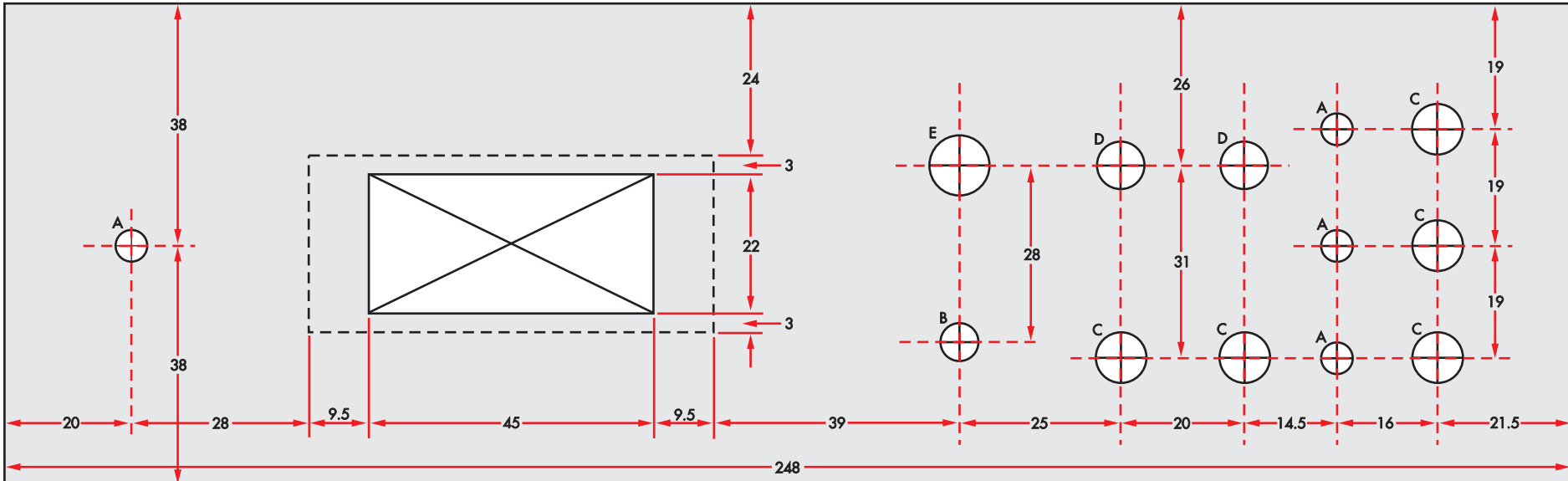
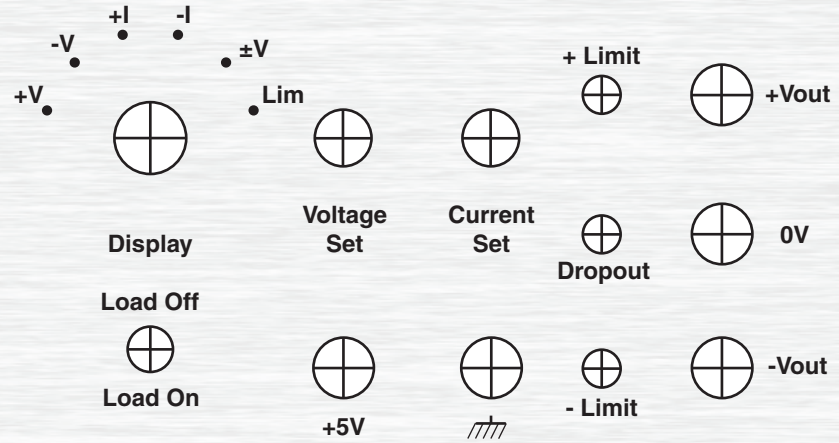
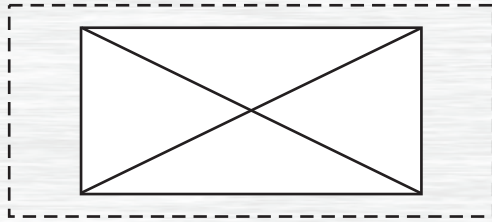


**SILICON  
CHIP**

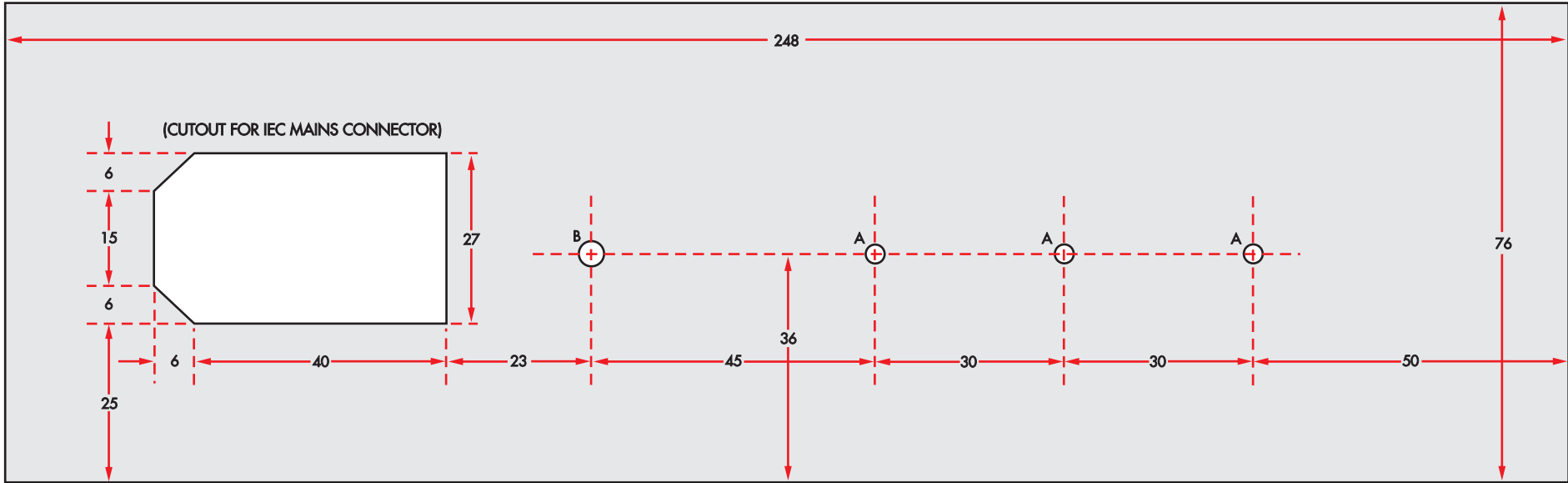
**DUAL TRACKING SUPPLY**

Power



HOLES A: 5.0mm DIAMETER    HOLE B: 6.0mm DIAMETER    HOLES C: 8.0mm DIAMETER    HOLES D: 7.5mm DIAMETER    HOLE E: 9.5mm DIAMETER

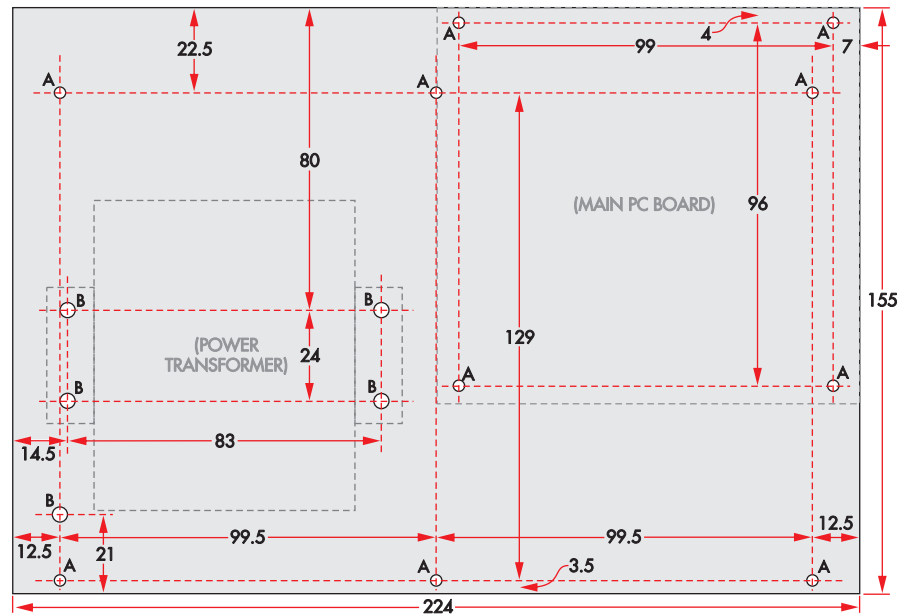
ALL DIMENSIONS IN MILLIMETRES



MAINS POWERED SUPPLY: REAR PANEL CUTTING/DRILLING DIAGRAM  
(SAME SIZE)

ALL DIMENSIONS IN MILLIMETRES

HOLES A: 3.0mm DIAMETER (REGULATOR MOUNTING)  
HOLE B: 4.0mm DIAMETER (EARTH LUG MOUNTING)



LARGER BASE  
PLATE