

MIC 1      MIC 2      GUITAR/  
AUX      LINE

**LEVEL**

BASS      TREBLE

**TONE**

power/standby ● ● fault

MIC 1      MIC 2      GUITAR/  
AUX      LINE  
IN

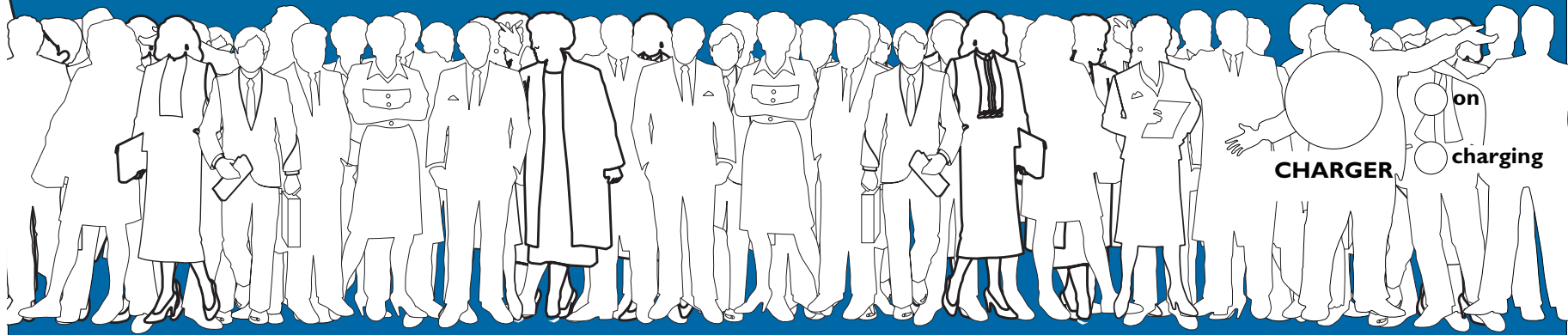
**INPUTS**

LINE  
OUTPUTS

FUSE: 7.5A



POWER



**SILICON  
CHIP** [www.siliconchip.com.au](http://www.siliconchip.com.au)

**PortaPAL**